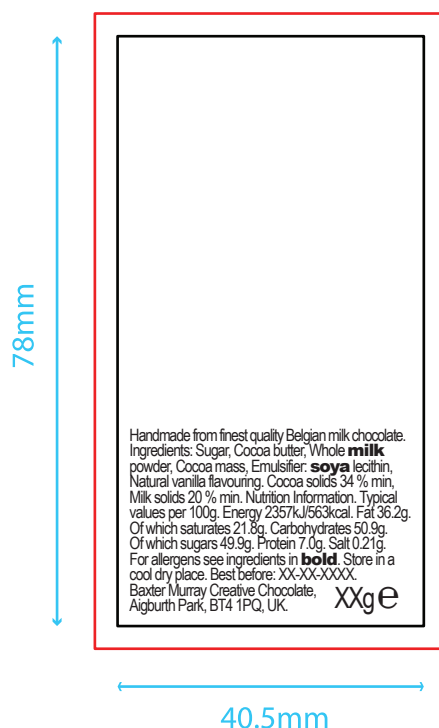




Baxter Murray Creative Chocolate  
Unit 2, 69a Aigburth Park, Belfast, BT4 1PQ.  
Tel. 028 9047 1310  
Email. [info@baxtermurray.co.uk](mailto:info@baxtermurray.co.uk)  
Website. [www.baxtermurray.co.uk](http://www.baxtermurray.co.uk)



- Artwork area
- Bleed Area  
(Please allow artwork to extend to this)

## Black and White 40.5 x 78mm Label

### Print spec:

Print will be black and white, no greyscale, one side only.

Please supply as CMYK based, 300dpi, PDF, PSD or AI file, with a minimum of 3mm printers bleed.

Supply as live artwork as correct *best before* date and *weight* will have to be added.

### Ingredients & traceability information:

This is a legal requirement, and has been reproduced at the smallest allowed size.

Font and font colour are flexible.

For unusual fonts, create outlines or supply the fonts with the artwork.

Any text or artwork should be inside the keyline to avoid being trimmed when cut.

If you have and questions or you need a hand to complete the artwork, contact [michael@baxtermurray.co.uk](mailto:michael@baxtermurray.co.uk) or call 028 9047 1310.

(A PDF will be returned for approval prior to any print work starting.)

